

LOCAL PLAN FOR THE BRADFORD DISTRICT

**Allocations
Development Plan
Document (DPD)**

Issues & Options

Implications for Harden



Current Status of Local Development Plan Documents

Core Strategy

Examination Nearing Completion

Adoption Expected Autumn 2016

42,100 new homes, 135 ha employment land

- Green belt review
- Waste Management Development Plan
- Bradford City Centre Area Action Plan
- Shipley & Canal Rd Corridor Area Action Plan
- Allocations DPD - Issues and Options



The Allocation DPD - Aims

- Respond to the needs of a growing population by delivering homes, traveller sites, & jobs, encourage regeneration, protect and improving valued greenspace and identifying and plan for required infrastructure;
- Set out the key sites which will be released to provide new homes, new jobs, services and facilities and infrastructure
 - Identify critical areas of importance – green space, landscape, heritage and biodiversity
- Deliver a plan which supports the Council's priorities and implements and follows the strategic policies within the Core Strategy

Allocations DPD – Geographical Coverage



Bradford is **not** consulting on

Housing targets, the need for homes, or other aspects which are dealt with in the Core Strategy



More targeted consultation on specific issues may follow including a **green belt review**

Harden Greenbelt



Consultation - Scope

- Housing sites
- Gypsies & Travellers
- Employment sites & zones
- Minerals areas of search and safeguarding areas



- Green spaces
- Retail, town centres district & local centres
- Renewable energy
- Community facilities & Infrastructure

Scale of the Task

- 25 Settlements – Effectively Mini Plans **including Harden**
- Approx 1000 candidate housing sites – Land for 42,100 new homes **including 100 in Harden**
- 60 Employment sites, 17 employment zones - 135ha employment land required
- 3 town, 7 district and **41 local centre boundaries** to review

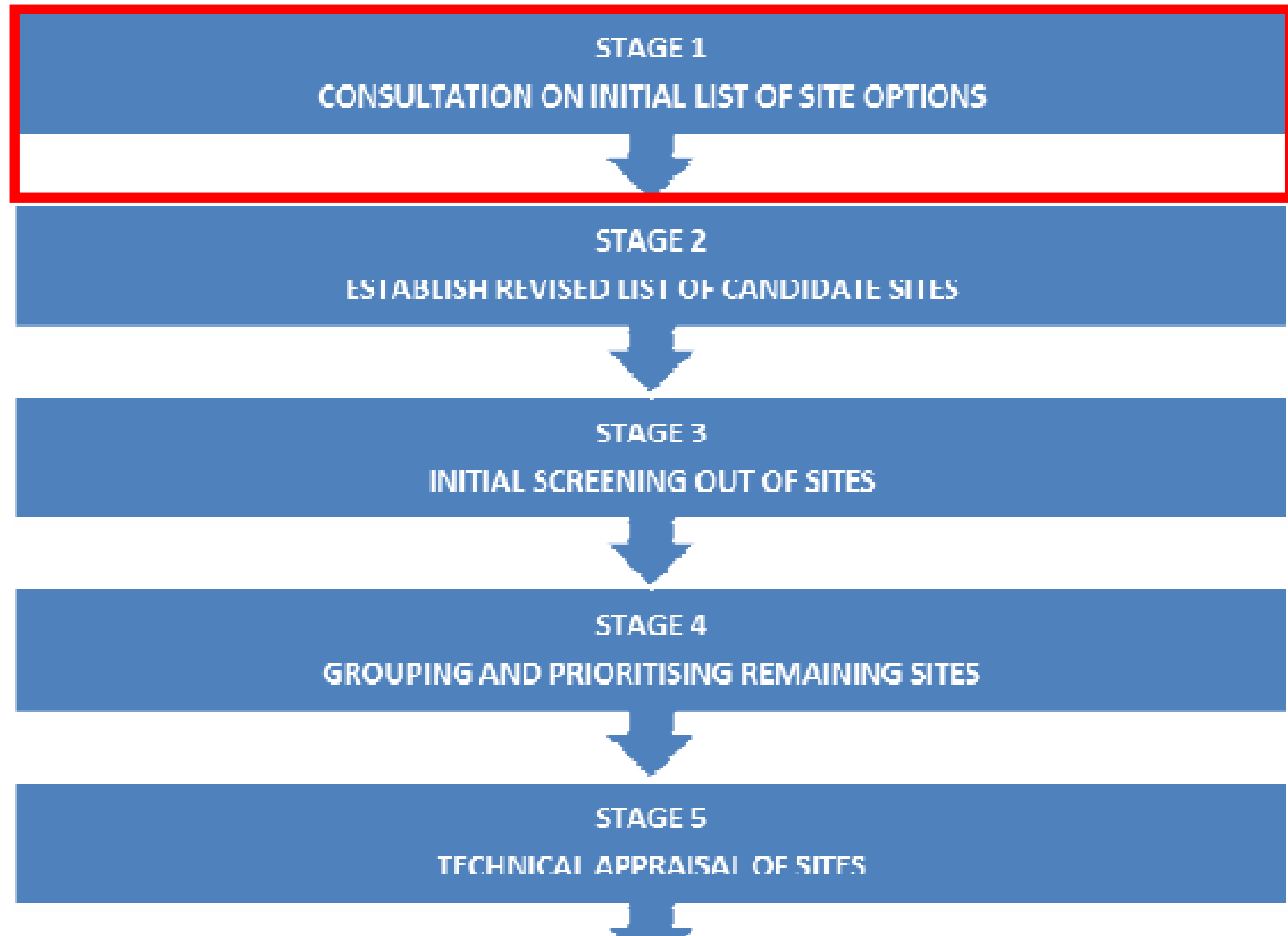


Some assessment criteria

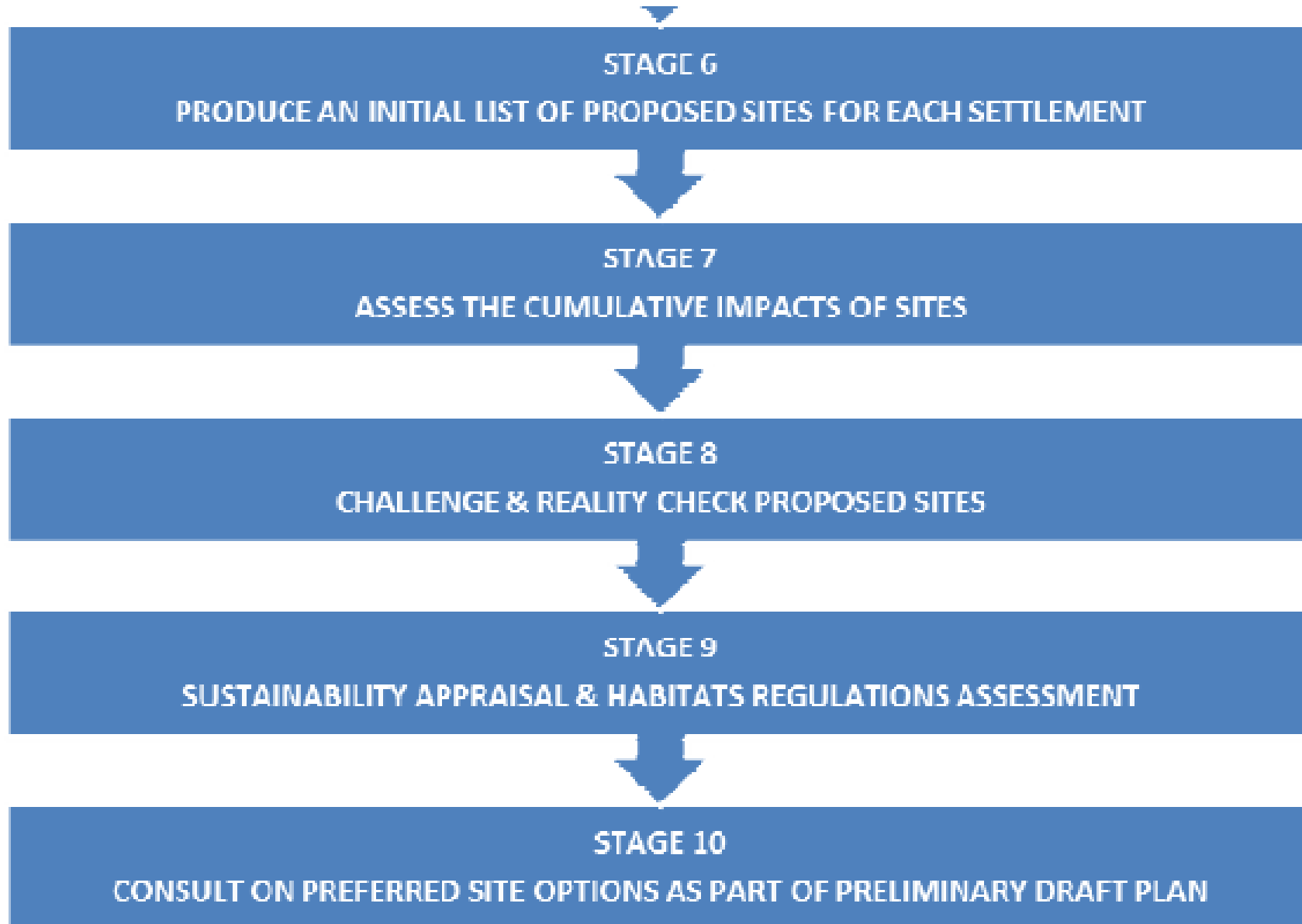
- **Flood risk,**
- **Highways impact**
- **Public transport**
- **Accessibility.**
- **Sustainability Appraisal,**
- **Habitats Regulations**
- **Health Impact**
- **Equalities Impact**



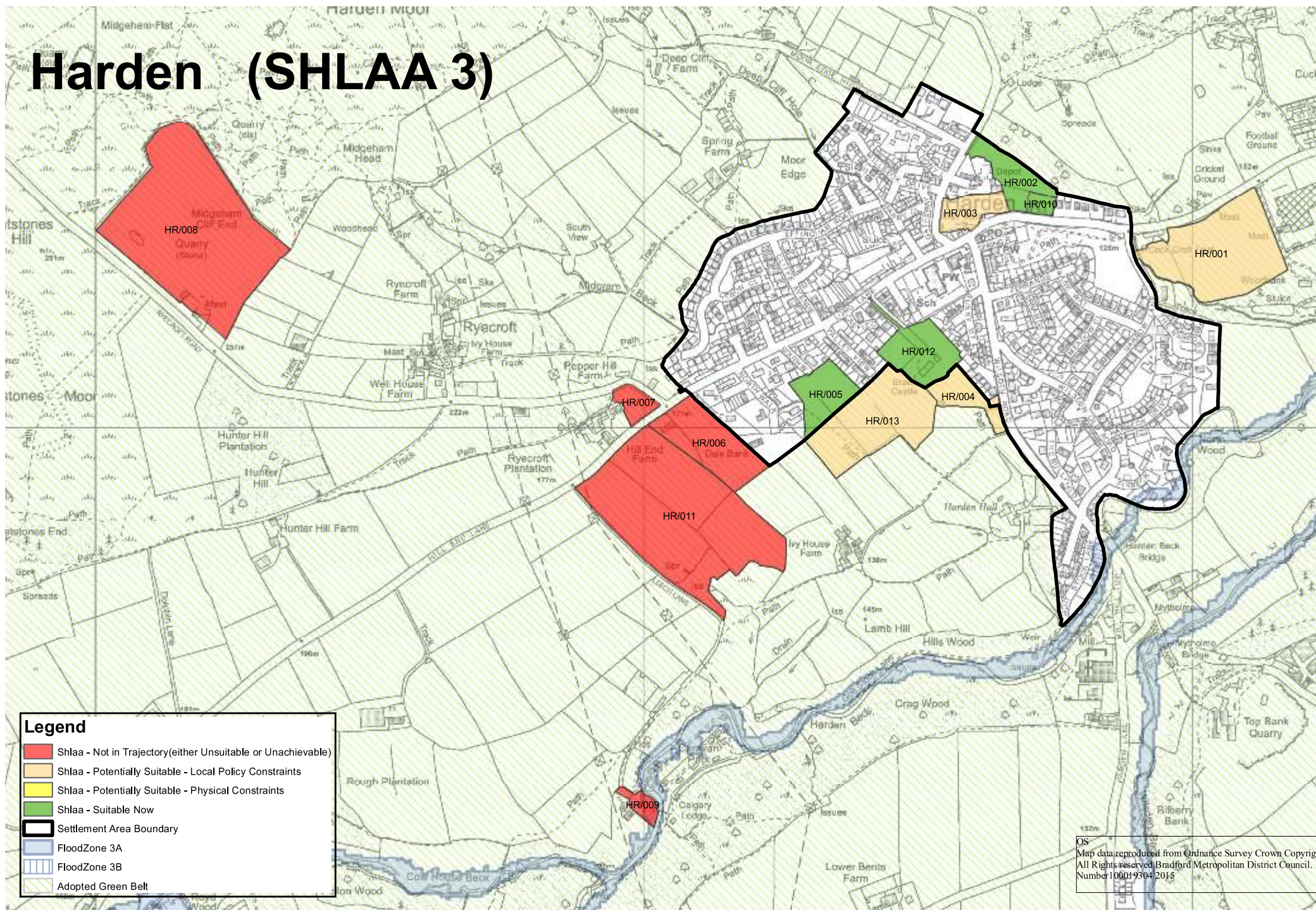
Site Assessment Process



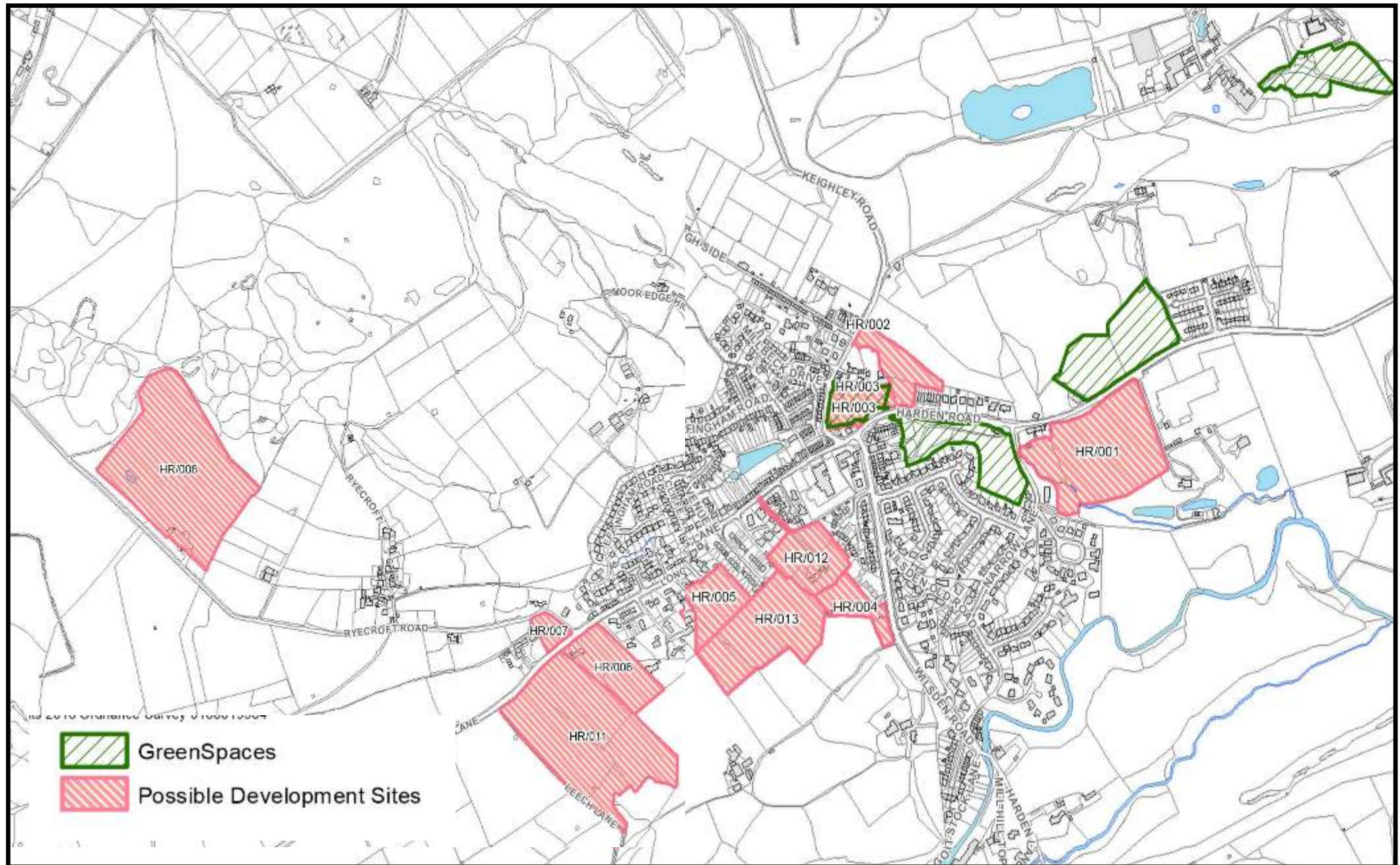
Site Assessment Process cont

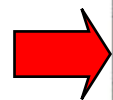
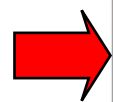
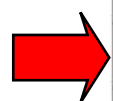


Harden (SHLAA 3)



Issues and options sites in Harden





Ref	Address	Site area (ha)	No of houses	Type of site	Land Type	Current Designation
HR/001	Harden Road,	3.23	85	Land	Greenfield	Green Belt
HR/002	Bingley Road	0.84	29	Land	Greenfield	Safeguarded Land
HR/003	Harden Road/ Keighley Road	0.62	20	Land	Greenfield	Village Greenspace
HR/004	Chelston House	0.67	21	Land	Greenfield	Green Belt
HR/005	South Walk	0.91	29	Land	Greenfield	Safeguarded Land
HR/006	Long Lane	1.66	53	Land	Greenfield	Green Belt
HR/007	Hill End Lane	0.36	13	Land	Greenfield	Green Belt
HR/008	Ryecroft Road,	6.79		Land	Previously Developed Land	Green Belt
HR/009	Goit Stock Lane	0.24		Land	Greenfield	Green Belt
HR/011	Hill End Lane	6.28	124		Greenfield	Green Belt
HR/012	Long Lane	1.19	4	Land	Greenfield	Green Belt
HR/013	Land off South Walk/ Wilsden Road	2.52	65	Land	Greenfield	Green Belt

DEVELOPMENT QUESTIONS

Which of the sites would be best suited for: Housing, Employment, Community use, Gypsies & Travellers, Travelling Show people, or Retail use?

Are there any other suitable development sites or locations which are not identified?

Should any of the sites, be identified for development either early in the Plan period or later?

Should the need for development be met by allocating fewer large sites or more small sites?

Should a housing density target be set for this settlement or to part of the settlement?

GREENSPACE QUESTIONS

Do you think the areas currently protected as greenspace in the RUDP should retain their greenspace designation?

Which of the areas have special significance and are most important?

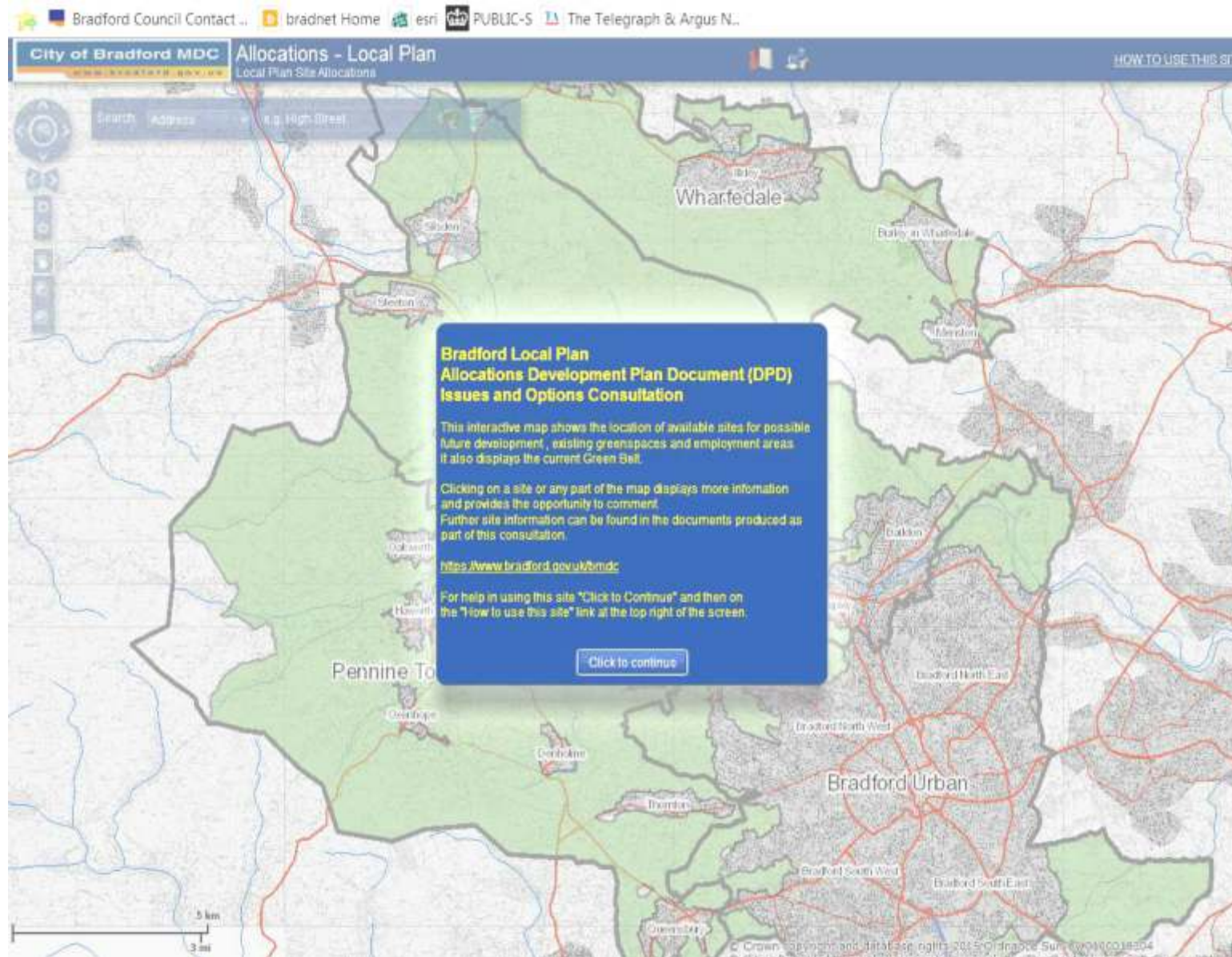
Are there any other areas not shown on the map which should also be protected?

How you and the Parish Council can comment

- Electronic & web based
- Paper, word and PDF
- Interactive web based map and online comment tool

https://www.bradford.gov.uk/bmdc/the_environment/planning_service/local_development_framework/land_allocations_dpd.htm

The Interactive Map and Online Comment Tool



The Interactive Map and Online Comment Tool

How to use the Allocations – Local Plan map.

1. Moving around the map

The screenshot shows the 'City of Bradford MDC Allocations - Local Plan' web application. The map displays various land use zones in different colors (green, red, orange, grey) over a satellite background. Several callout boxes provide instructions:

- Top Left:** A yellow callout box points to the map navigation controls (compass, zoom in/out buttons, street view pegman) and contains the text: "Use the controls to the left of the screen to move around the map and to zoom in and out."
- Top Right:** A yellow callout box points to a 'Bookmarks' icon in the top right corner and contains the text: "Open Bookmarks here".
- Bottom Left:** A yellow callout box points to a 'Bookmarks' list panel on the left side of the map. The list includes: "Bradford South East", "Bradford South West", "Burley in Wharfedale", "Cullingley", "Cullingworth", "Dentholme", and "East Morton". The callout text says: "Open the 'Bookmarks' list to find a Settlement area. Selecting from this list moves the map to show that area."

At the top right, there is a small blue box with a lightbulb icon and the text "Click on files to P".

The Interactive Map and Online Comment Tool

City of Bradford MDC

www.bradford.gov.uk

Bradford Council

[Contact us now](#)

[Find a council office](#)

[Find your councillor](#)

BRADFORD LOCAL PLAN

You are in > [Home](#) > [Contact us](#)

Bradford local Plan Questionnaire

This questionnaire has been produced by Bradford Council and is part of its statutory duty to prepare a Local Plan. Please complete this form by answering those questions which you have an opinion on and provide your contact details. Please complete one form per person per settlement area.

You are commenting on the following area:

Pennine Towns - Harden

This is in the area of: Harden Road/Keighley Road, Harden

The site reference is: HR/003

Note: You are commenting on a Greenspace area

Please answer the following question

Are you an Local resident, business owner, Parish Council, Community group, Planning Consultant/Agent, Private developer, Other?

- Local resident ☐
- Local business owner ☐
- Parish Council ☐
- Community group ☐
- Planning Consultant/Agent ☐
- Registered Social Landlord ☐
- Private developer ☐
- Other (please specify) ☐

Continue with the form

It appears that you have cookies enabled on your device so you can save this contact information so that if you intend to submit another questionnaire your details will be remembered, If you prefer you can continue without saving but if you return to the form to make another comment you will need to enter your contact details again.

If you are using a shared/public device you should NOT save your details but instead select 'Continue without saving details'

[Save details and continue](#)

[Continue without saving details](#)

Timetable

- **Current Consultation Closes Tuesday 19th July**
- **But further specific consultation will be carried out on Green Belt Review and possibly other areas of work**
- **Assess & narrow the Options**
- **Preliminary Draft Plan Early 2017**
- **Publication Draft Plan Late 2017**
- **Submission To Planning Inspectorate Spring 2018**
- **Examination In Public By Planning Inspectorate Summer 2018**
- **Adoption end of 2018 / early 2019**



Allocations DPD

Questions and comments?

Slide 14