

HARDEN NEIGHBOURHOOD PLAN

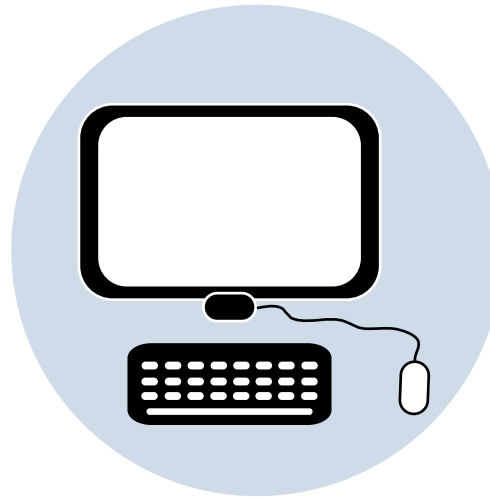
SUMMARY OF INITIAL ENGAGEMENT

TO DATE THERE HAS BEEN 114 REPRESENTATIONS



PAPER

+



ONLINE

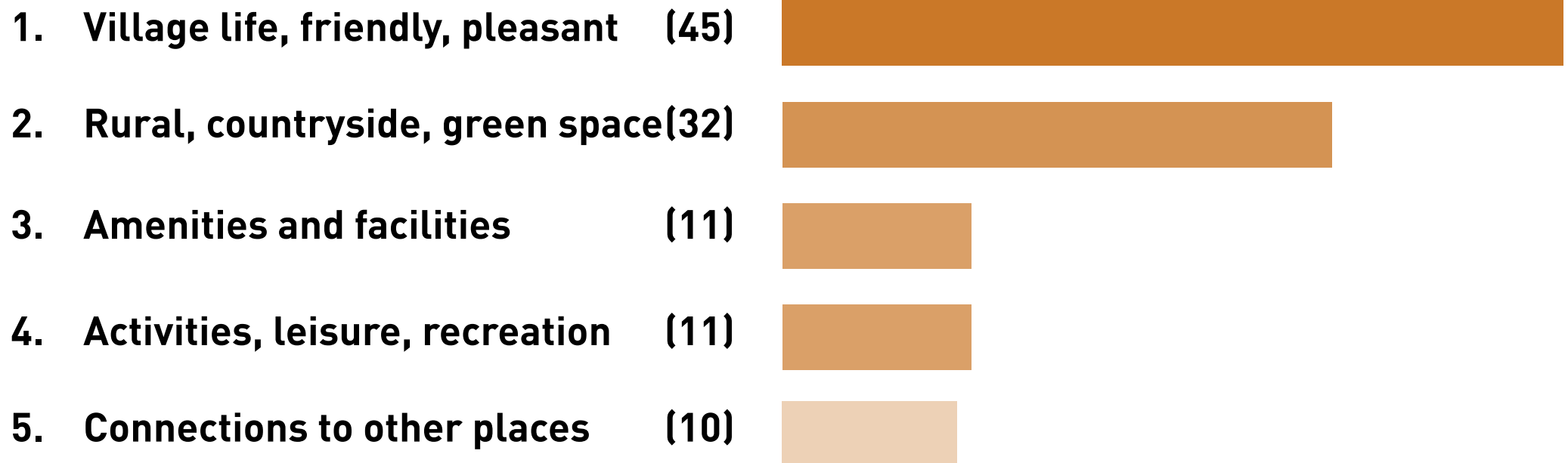


DROP-IN

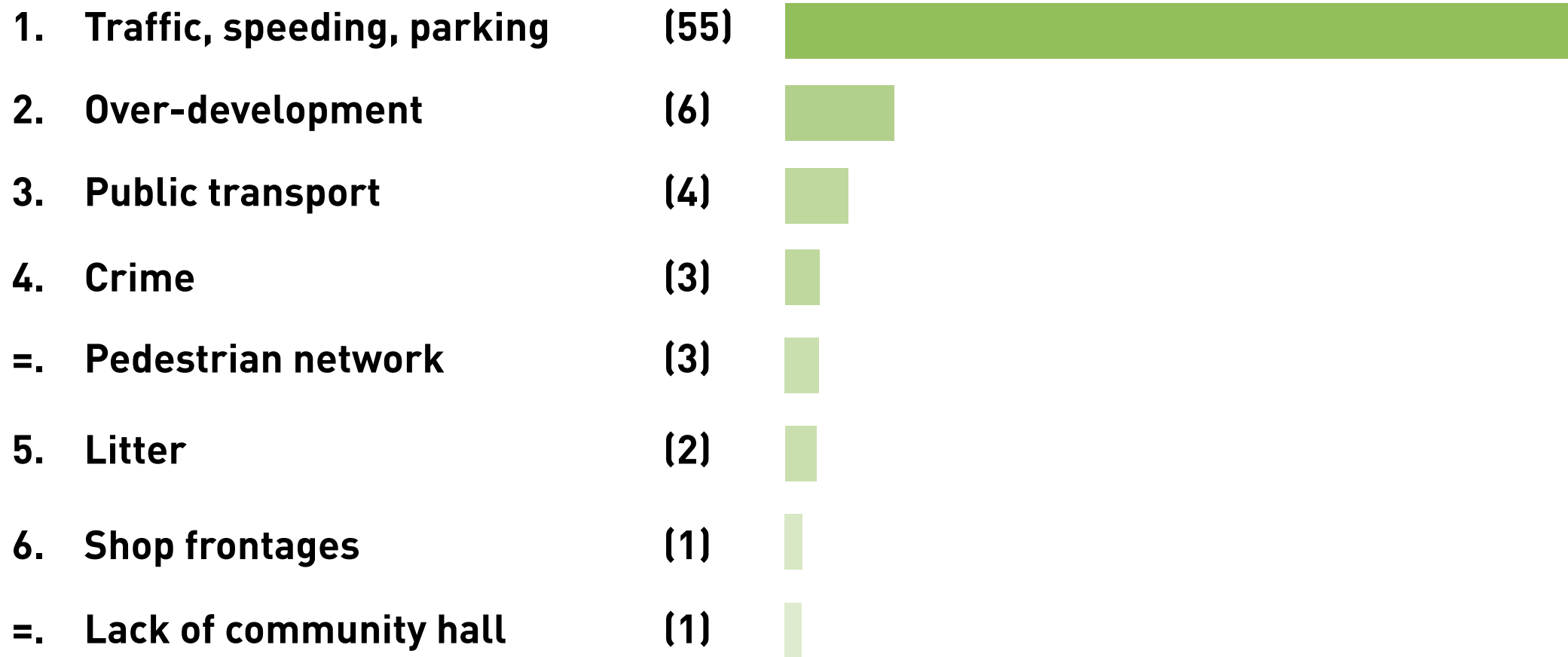
84

30

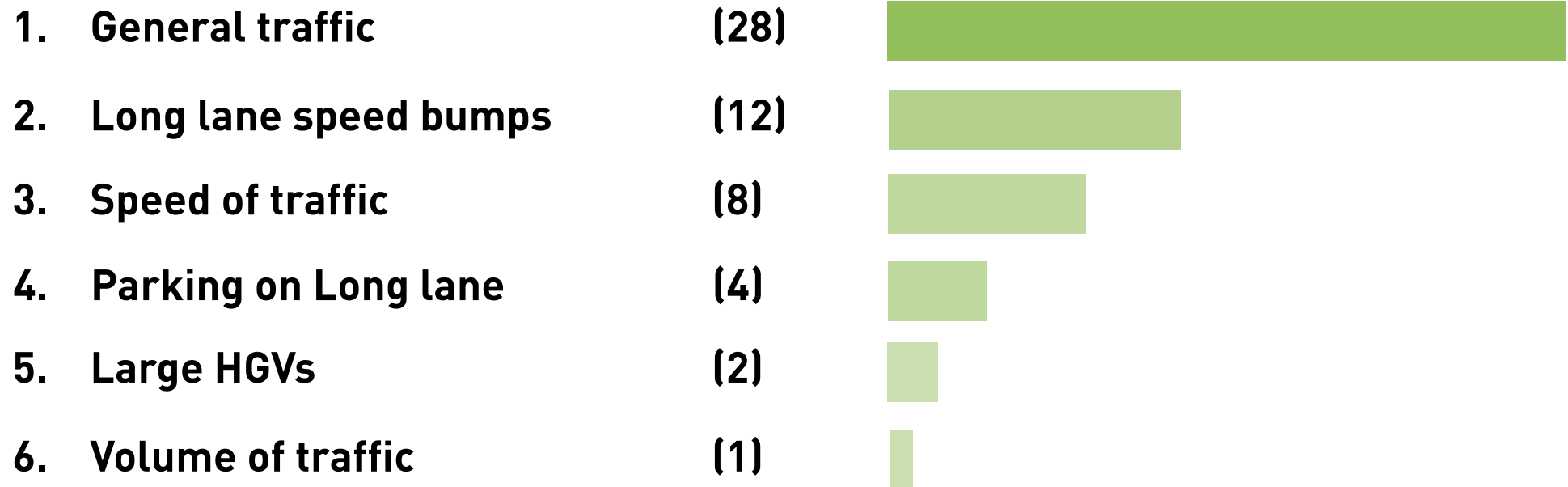
WHAT DO YOU VALUE THE MOST ABOUT HARDEN?



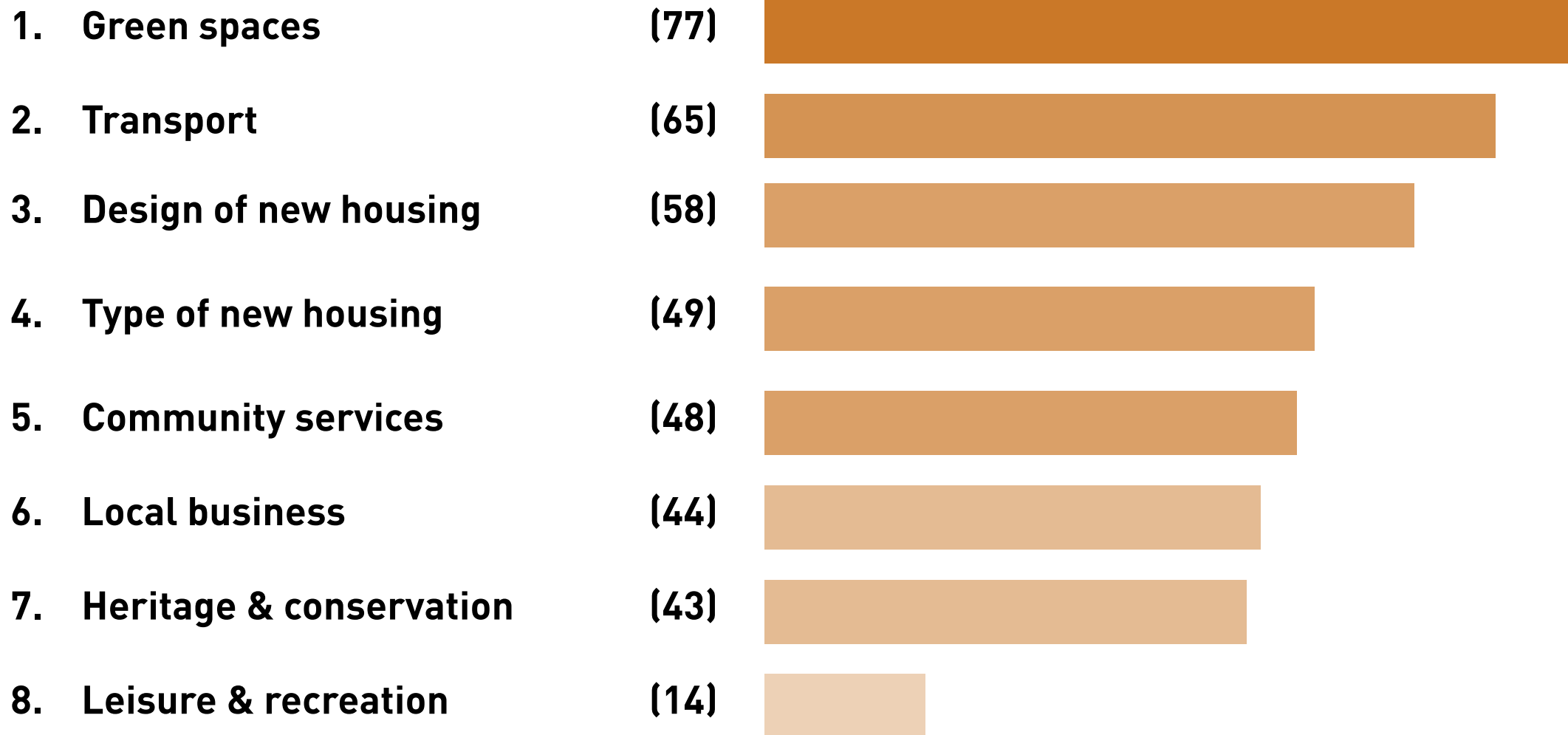
WHAT DO YOU LIKE LEAST ABOUT HARDEN?



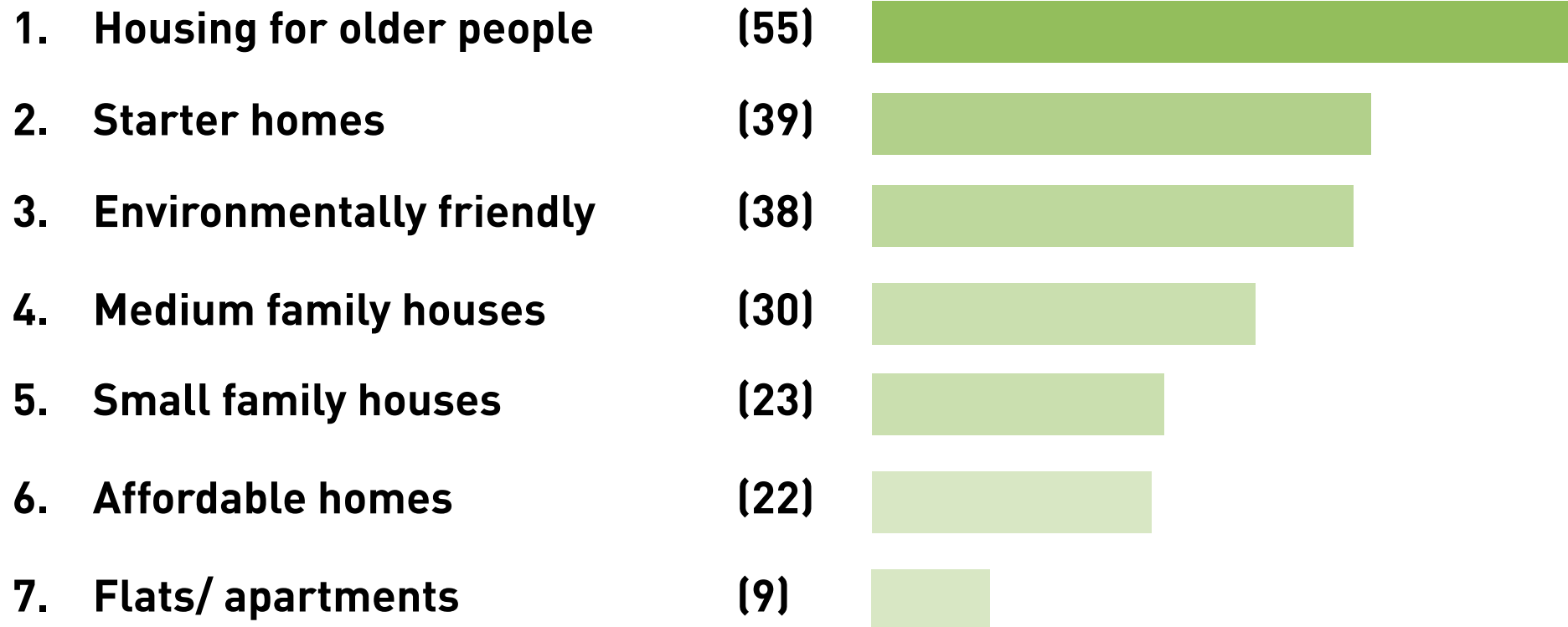
SUMMARY OF COMMENTS ABOUT TRAFFIC & TRANSPORT



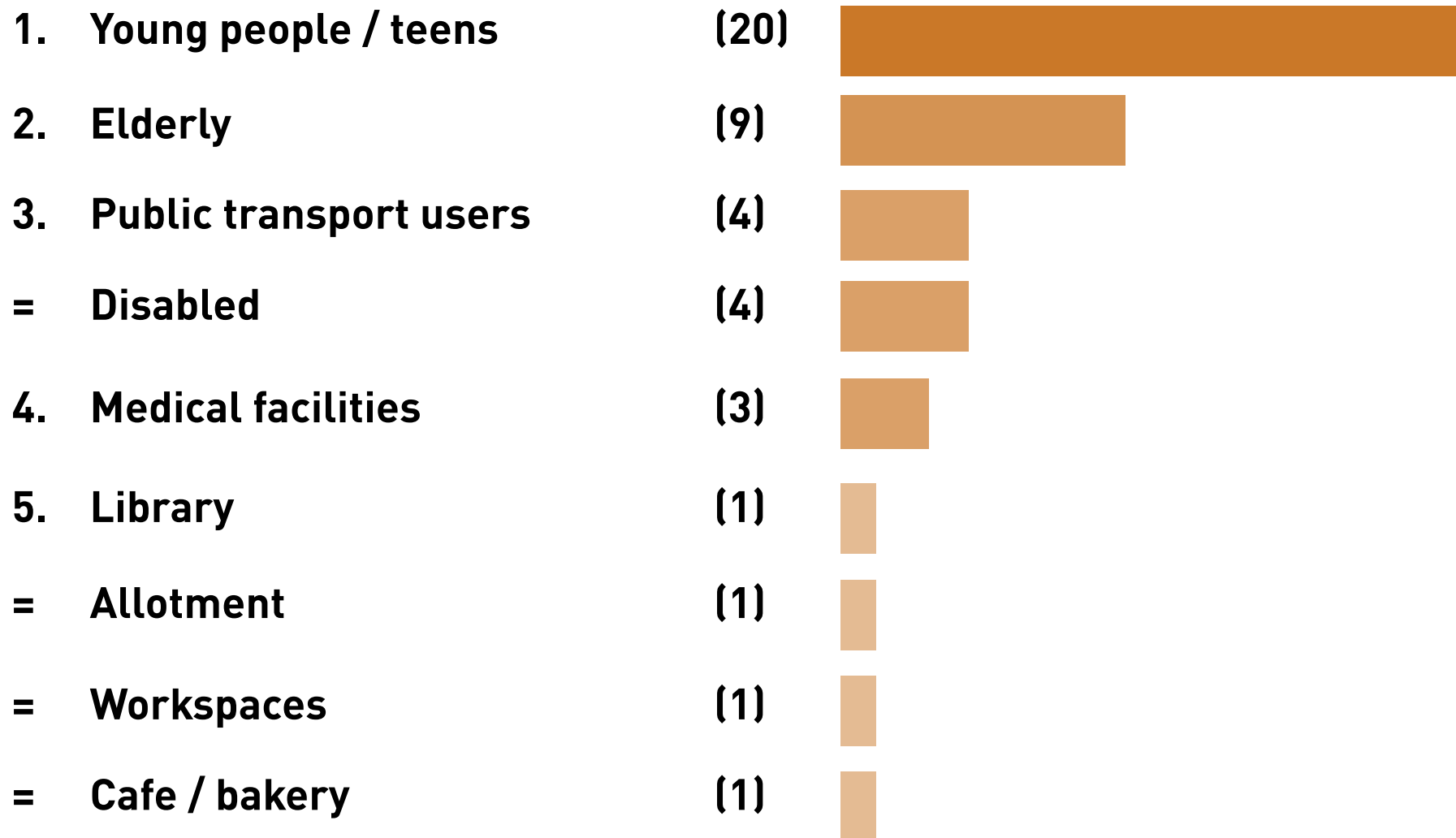
WHAT ISSUES SHOULD THE NP COVER?



WHAT TYPES OF NEW HOUSING IS NEEDED LOCALLY ?

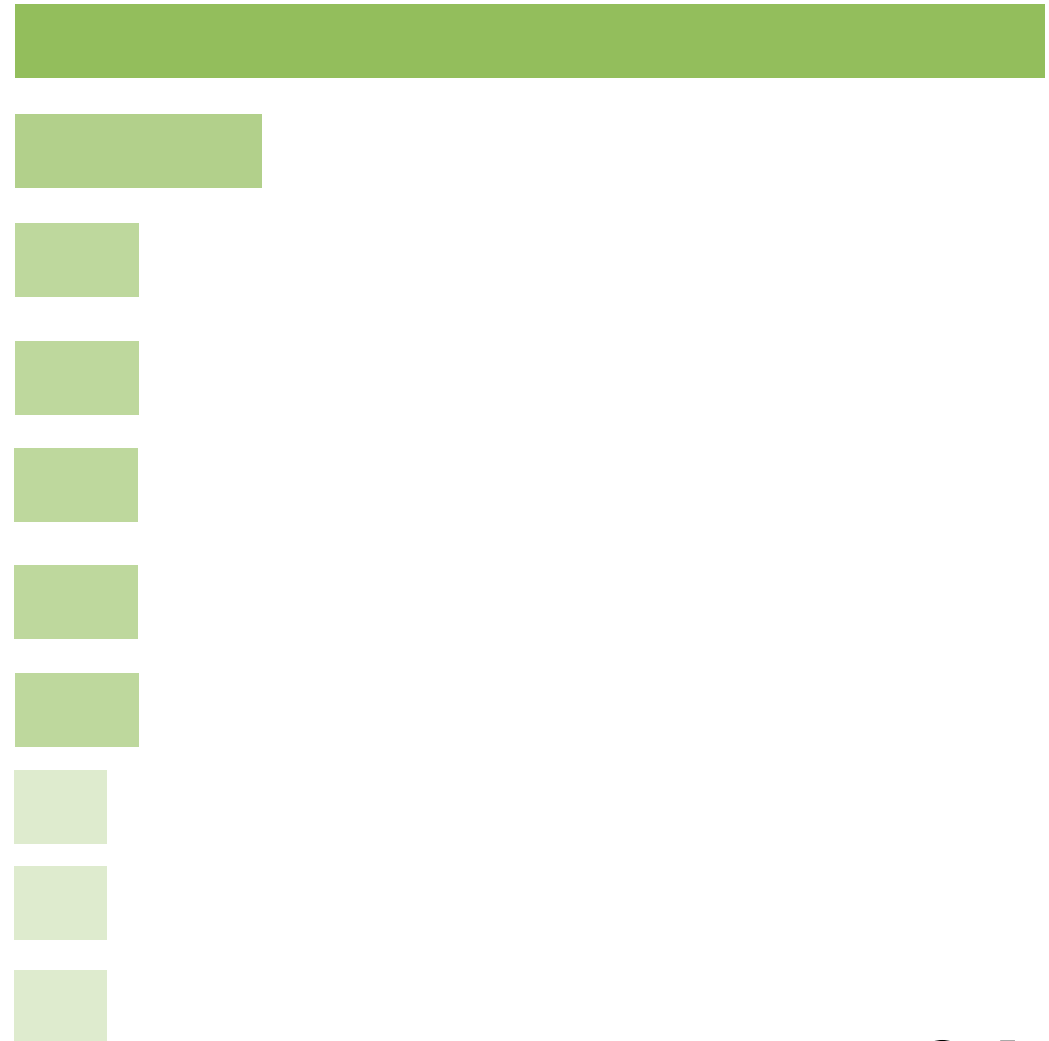


GROUPS THAT LACK SERVICES OR FACILITIES

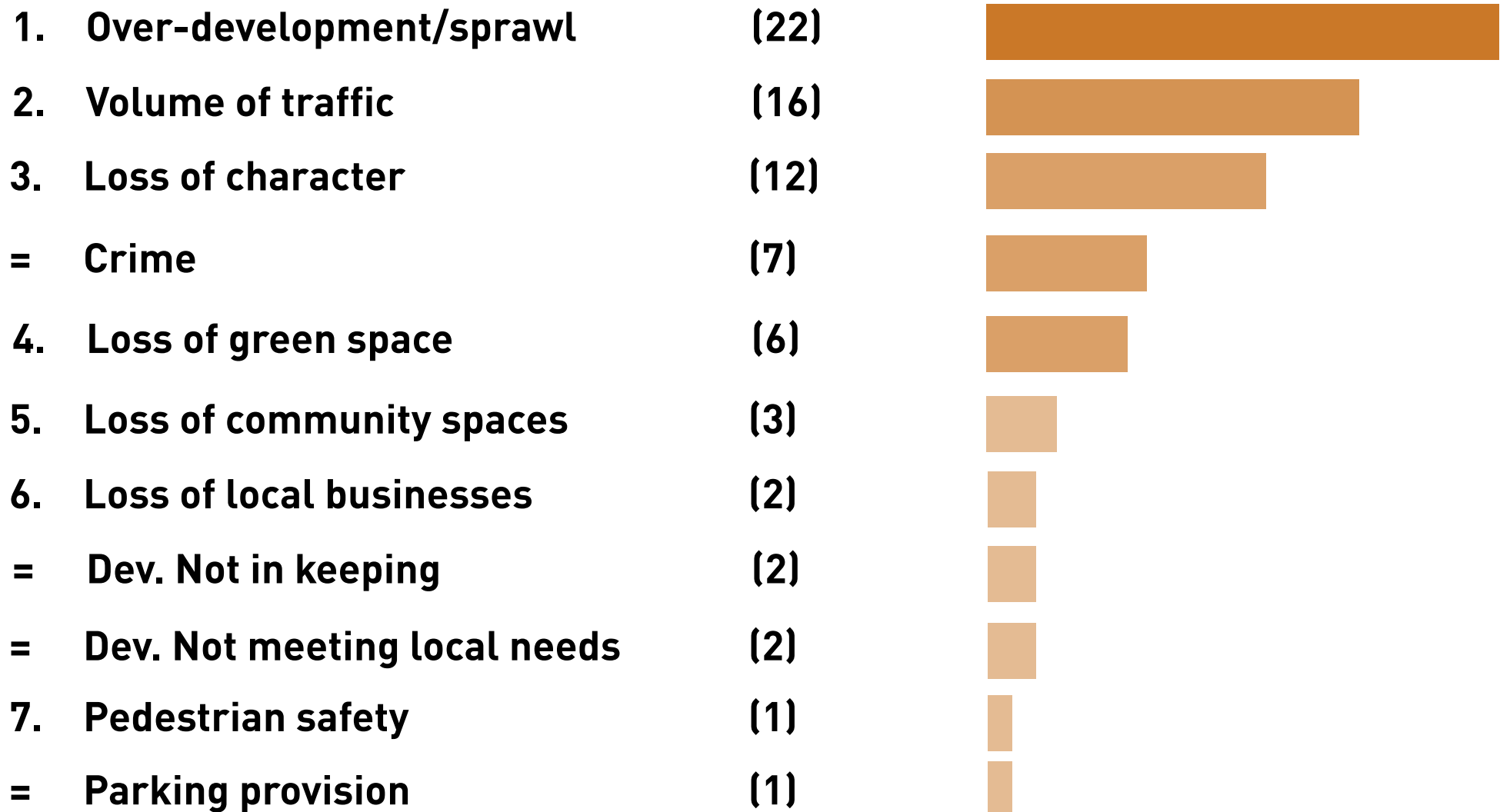


HARDEN IN 15 YEARS

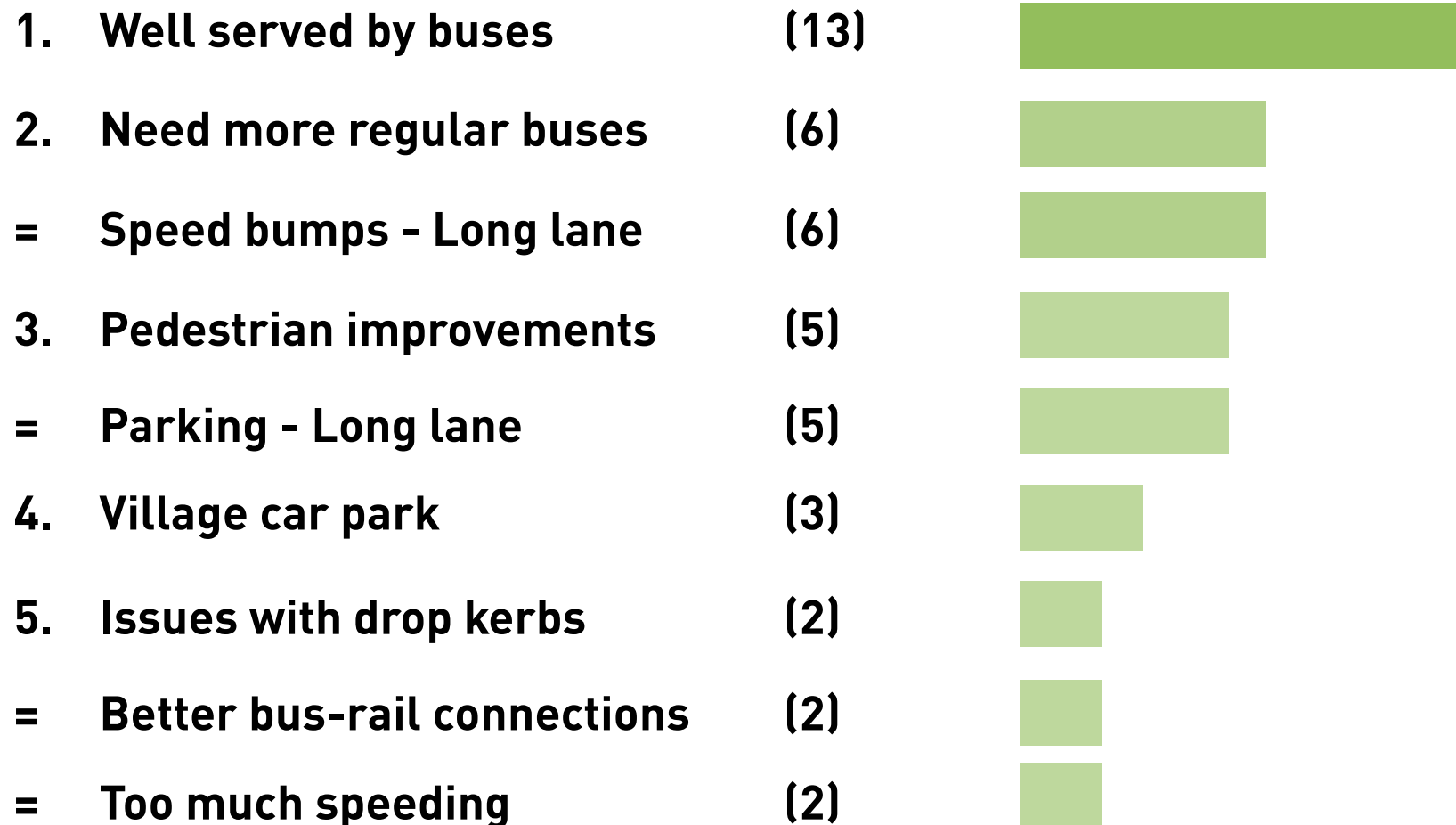
- 1. Retain rural character (34)
- 2. Improved services (8)
- 3. Better public transport (4)
- = Less traffic (4)
- = Community spirit (4)
- = Diverse & inclusive (4)
- = More shops & businesses (4)
- 4. Retain green spaces (3)
- = More young families (3)
- = High quality development (3)



CONCERNS ABOUT THE FUTURE OF HARDEN



VIEWS ON TRAVEL, TRANSPORT & ACCESSIBILITY



VEHICLES & PARKING

1 Vehicle (32)



2 Vehicles (19)



0 Vehicles (4)



3+ Vehicles (4)



Garage / driveway (48)



On-street (6)



N/a (5)



OTHER COMMENTS

- **Lack of school places and doctor appointments**
- **Poor condition of footpaths**
- **Additional allotment provision**
- **Require community centre**
- **Better maintenance of green spaces**
- **Improved road safety**
- **Better internet coverage**
- **Support local shops & businesses**

SUMMARY OF DROP-IN EVENT



DROP-IN

30

- **Suggestion of using unused school field as car park**
- **Better pedestrian footpaths needed to Bingley and to Wilsden**
- **Improvements to crossing at St. Ives entrance & mini roundabout**
- **Improved signage needed on walking routes**
- **Smaller housing needed for young families and those down-sizing**
- **Parking provision and visitor parking key in new schemes**
- **Worries about strain on local services (doctor & schools)**
- **Improved broadband coverage is needed**
- **Support for small businesses and shops (cafe, bakery etc)**
- **Support for shared workspace, workshops, small business units**
- **Encourage greater mix of residents**